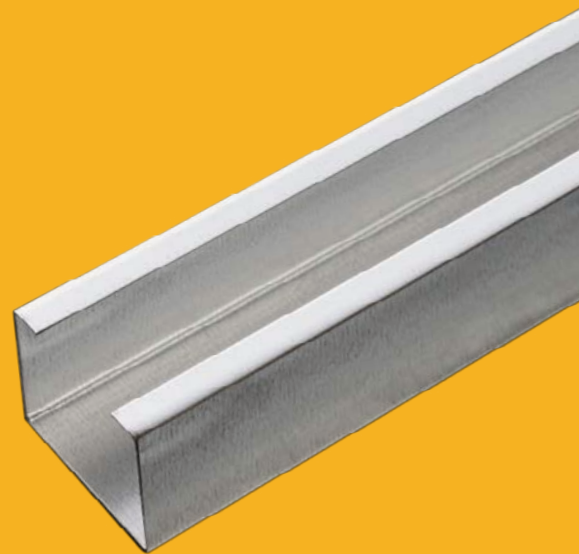
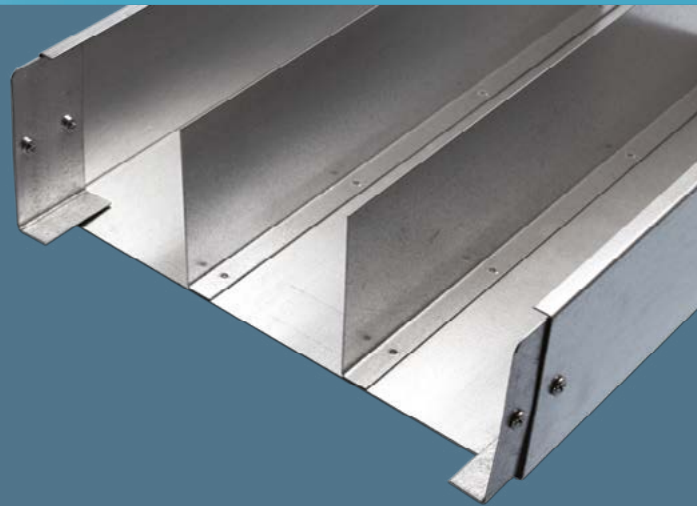
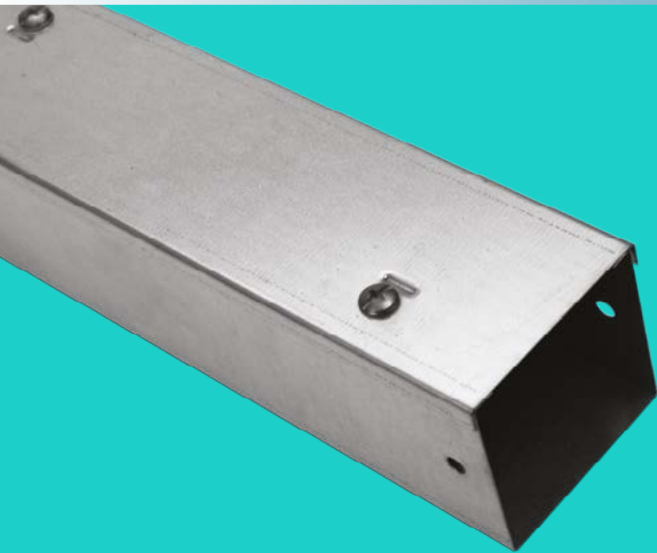


# Armorduct

**cable management**



cable trunking technical specifications

### standard & multi compartment cable trunking

Armorduct cable trunking systems are designed for installation on walls and ceilings in a range of different finishes (see below) and are joined together with integral couplers, all fixings and lids are supplied with each trunking length or accessory. Surfaces of system components which are likely to come into contact with cables during installation are inspected to ensure they shall not cause damage to the cables when installed correctly. Screwed connections have been designed to withstand the mechanical stresses during the installation and normal use and will not cause damage to cables when correctly inserted. Screwed connections are generally isometric threads fully compliant with tests in accordance of the standard.

Title	Cable Trunking Systems for Electrical Installations		
British Standards Publication Date Replaces International Relationships	BS EN 50085-2-1: 2006 + A1: 2011 30th Nov 2006 BS4678-1: 1971 EN 50085-2-1: 2006		
Minimum Transport & Storage Temperature	-25°C		
Maximum Transport & Storage Temperature	+60°C		
Minimum Installation & Application Temperature	-25°C		
Fire	Non flame propagating		
Continuity	Cable trunking systems do have electrical continuity characteristics		
Insulation	Cable trunking systems do not have electrical insulating properties		
Separation	Cable trunking systems do not have internal protective partition		
Installation Positions	Cable trunking products can be mounted on a wall or ceiling		
Screw Tightening	Screws intended to be tightened should be done so with a screwdriver at a torque of 2Nm		
Assembly	Components fit together using integral couplers & hank bush fixings		
Maximum Voltage for Installations	1000v a.c & 1500v d.c		
Available Finishes:  Ordering Information: For finishes please add relevant suffix to the part number e.g. <b>AGT44/HDG</b>	/PG	Pre Galvanised	BS EN 10346: 2015
	/HDG	Hot Dipped Galvanised	EN ISO 1461
	/PC	Powder Coated	BS EN 13438:2013
	/WP	Weatherproof	IP54 or CPC Coating
	/SS	304 Grade Stainless Steel	BS EN 10088-1:2014
316 Grade Stainless Steel		BS EN 10088-1:2014	

# Armorduct cable management

## standards & specifications

### standard & multi compartment weights



All sizes & weights shown are standard



Key:

X - Not available

NB - weights in pre-galvanised

#### Cable Trunking Sizes, Compartments & Weights

size	50 x 25	50 x 50	75 x 50	75 x 75	100 x 50	100 x 75	100 x 100	150 x 50
<b>1 comp</b>	AGT21 3.6kg	AGT22 4.6kg	AGT32 5.6kg	AGT33 6.6kg	AGT42 6.6kg	AGT43 8.6kg	AGT44 8.6kg	AGT62 8.6kg
<b>2 comp</b>	AGT21/2 4.3kg	AGT22/2 5.8kg	AGT32/2 6.8kg	AGT33/2 8.3kg	AGT42/2 7.8kg	AGT43/2 10.3kg	AGT44/2 10.8kg	AGT62/2 9.8kg
<b>3 comp</b>	X	X	AGT32/3 8.0kg	AGT33/3 10.0kg	AGT42/3 9.0kg	AGT43/3 12.0kg	AGT44/3 13.0kg	AGT62/3 11.0kg
<b>4 comp</b>	X	X	X	X	X	X	X	AGT62/4 12.2kg
size	150 x 75	150 x 100	150 x 150	200 x 50	200 x 100	225 x 50	225 x 75	225 x 100
<b>1 comp</b>	AGT63 9.6kg	AGT64 10.6kg	AGT66 16.3kg	AGT82 10.6kg	AGT84 12.6kg	AGT92 12.6kg	AGT93 14kg	AGT94 15kg
<b>2 comp</b>	AGT63/2 11.3kg	AGT64/2 12.8kg	AGT66/2 19.5kg	AGT82/2 11.8kg	AGT84/2 14.8kg	AGT92/2 13.8kg	AGT93/2 15.7kg	AGT94/2 17.2kg
<b>3 comp</b>	AGT63/3 13.0kg	AGT64/3 15.0kg	AGT66/3 22.7kg	AGT82/3 13.0kg	AGT84/3 17.0kg	AGT92/3 15.0kg	AGT93/3 17.4kg	AGT94/3 19.4kg
<b>4 comp</b>	AGT63/4 14.7kg	AGT64/4 17.2kg	AGT66/4 25.9kg	AGT82/4 14.2kg	AGT84/4 19.2kg	AGT92/4 16.2kg	AGT93/4 19.1kg	AGT94/4 21.6kg
size	225 x 150	225 x 225	300 x 50	300 x 75	300 x 100	300 x 150	300 x 225	300 x 300
<b>1 comp</b>	AGT96 20kg	AGT99 16.5kg	AGT122 20kg	AGT123 21.5kg	AGT124 26.5kg	AGT126 27.7kg	AGT129 28.9kg	AGT1212 32kg
<b>2 comp</b>	AGT96/2 23.2kg	AGT99/2 21.6kg	AGT122/2 21.2kg	AGT123/2 23.2kg	AGT124/2 28.7kg	AGT126/2 30.9kg	AGT129/2 34.0kg	AGT1212/2 38.5kg
<b>3 comp</b>	AGT96/3 29.6kg	AGT99/3 26.7kg	AGT122/3 22.4kg	AGT123/3 24.9kg	AGT124/3 30.9kg	AGT126/3 34.1kg	AGT129/3 39.1kg	AGT1212/3 45.0kg
<b>4 comp</b>	AGT96/4 29.6kg	AGT99/4 31.8kg	AGT122/4 23.6kg	AGT123/4 26.6kg	AGT124/4 33.1kg	AGT126/4 37.3kg	AGT129/4 44.2kg	AGT1212/4 51.5kg

### security cable trunking



variations  
available

All security cable trunking lengths and accessories will be supplied screw-fix with the following:

All trunking bodies to have a 15mm wide return flange  
Trunking body to have x 6 M5 avdel bushes as standard, a recommendation of x 3 each side suitable for screw-fix lid. Variations available on request.

All trunking lengths and lids to be supplied 3m long

All connector holes to be round

'U' type connectors to be supplied on single compartment trunking  
'Fish-Plate' type connectors to be supplied on multi-compartment trunking

Screws for cover, connectors and accessories to be M5 x 12mm tamperproof (Snake Eye or Torx)



Screw Bush Security Trunking					
size	50 x 25	50 x 50	75 x 50	75 x 75	100 x 50
	ASBGT/21	ASBGT/22	ASBGT/32	ASBGT/33	ASBGT/42
size	100 x 75	100 x 100	150 x 50	150 x 75	150 x 100
	ASBGT/43	ASBGT/44	ASBGT/62	ASBGT/63	ASBGT/64
size	150 x 150	200 x 50	200 x 100	225 x 50	225 x 75
	ASBGT/66	ASBGT/82	ASBGT/84	ASBGT/92	ASBGT/93
size	225 x 100	225 X 150	225 X 225	300 X 50	300 X 75
	ASBGT/94	ASBGT/96	ASBGT/99	ASBGT/122	ASBGT/123
size	300 X 100	300 X 150	300 X 225	300 X 300	
	ASBGT/124	ASBGT/126	ASBGT/129	ASBGT/1212	



Tamperproof Security Trunking					
size	50 x 25	50 x 50	75 x 50	75 x 75	100 x 50
	ASBGT21/TP	ASBGT22/TP	ASBGT32/TP	ASBGT33/TP	ASBGT42/TP
size	100 x 75	100 x 100	150 x 50	150 x 75	150 x 100
	ASBGT43/TP	ASBGT44/TP	ASBGT62/TP	ASBGT63/TP	ASBGT64/TP
size	150 x 150	200 x 50	200 x 100	225 x 50	225 x 75
	ASBGT66/TP	ASBGT82/TP	ASBGT84/TP	ASBGT92/TP	ASBGT93/TP
size	225 x 100	225 X 150	225 X 225	300 X 50	300 X 75
	ASBGT94/TP	ASBGT96/TP	ASBGT99/TP	ASBGT122/TP	ASBGT123/TP
size	300 X 100	300 X 150	300 X 225	300 X 300	
	ASBGT124/TP	ASBGT126/TP	ASBGT129/TP	ASBGT1212/TP	

# Armorduct cable management

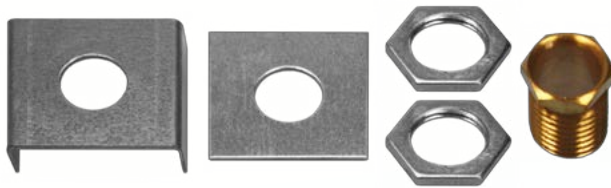
## standards & specifications

### lighting trunking

A range of 50mm x 50mm lighting trunking and accessories supplied in 3 and 5 metre lengths manufactured from galvanised sheet steel. Individual lengths of trunking are connected together by 300mm long internal sleeve couplers. The trunking lid is designed to clip into the body of the trunking section and is manufactured from steel or plastic in standard lengths of 2 metres or 3 metres. The lighting trunking is also available in 50mm x 25mm specification. Alternative lengths are available up to 6 metres.



Lighting Trunking		
size	3m	5m
50 x 50	ASG55/3 3.4kg	ASG55/5 5.67kg



ABSS - Bush Suspension Set

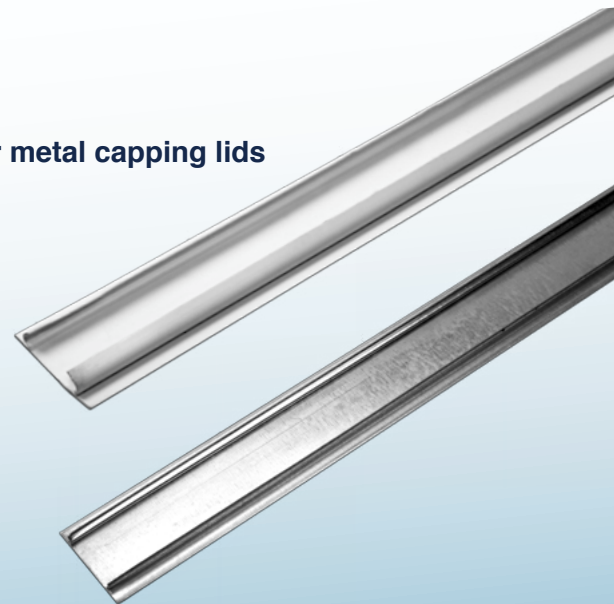
ASSB55 - Stirrup Hanger



Choice of plastic or metal capping lids

APCW - Plastic

ASCG - Galvanised





# Armorduct cable management

## standards & specifications

### weatherproof trunking



Our standard range of single and multi compartment surface trunking has been designed to achieve ingress protection to a rating of IP54 or CPC coating (variations available). The system is designed with an outward returned flange which is gasketed. The gasket is compressed between the flange and an overlapping lid by screws which fix to bushes inserted into the flange.

Joints between trunking lengths and accessories are secured using a combination of external and internal couplers, both of which are also gasketed.

The trunking is supplied in 2m lengths as standard complete with body, lid, internal and external couplers as well as all necessary fixing screws.

For ordering weatherproof trunking please add /WP to the trunking part number which can be found in the table on page 1.

#### solid

	<b>1</b>	Protected against solid bodies 50mm or greater e.g a hand
	<b>2</b>	Protected against solid bodies 12.5mm or greater e.g a finger
	<b>3</b>	Protected against solid bodies 2.5mm or greater e.g tools & wires
	<b>4</b>	Protected against solid bodies 1mm or greater e.g thin tools & fine wires
	<b>5</b>	Protected against fine particles i.e dust
	<b>6</b>	Completely protected against fine particles or 'dust tight'

#### liquid

	<b>1</b>	Protected against water drops
	<b>2</b>	Protected against water drops from a 15° angle
	<b>3</b>	Protected against water sprayed up to 60° angle
	<b>4</b>	Protected against water splashing from all directions
	<b>5</b>	Protected against jets of water from all directions
	<b>6</b>	Protected against powerful jets of water from all directions
	<b>7</b>	Protected when immersed in water temporarily
	<b>8</b>	Protected when immersed in water continuously

### stainless steel 304 & 316 trunking

Stainless steel manufactured to ASTM 9108-94 (2015) or BS EN 10088-1: 2014 without a post treatment. The European standard that lists the chemical composition of stainless steels which are subdivided in accordance with their main properties into corrosion resisting steels, heat resisting steels and creep resisting steels.

#### 304 - suitable for clean rooms, food preparation, factories and wash down areas

304 grade stainless steel is the most widely used type of stainless because it has a high resistance to rust. It endures corrosion from most oxidizing acids and is often used for factory, food and kitchen installations. Although it is highly resistant to rust it can be liable to corrosion from chloride solutions that can create localised areas of corrosion called pitting. This can spread beneath the protective layers and compromise the understructure of the material. Solutions just 25 ppm of sodium chloride can start to have a corrosive effect on steel.

#### 316 - Suitable for marine environments, food preparation, oil rigs, ships refineries, plants and mills

316 grade stainless steel has almost the same physical and mechanical properties as 304 grade, the difference being that 316 stainless steel comprises of around 2 to 3 percent molybdenum, which increases corrosion resistance especially against chlorides and other industrial solvents.

316 stainless steel is frequently used in many industrial installations including processing chemicals, as well as high saline environments such as outdoor and coastal regions where the use of de-icing salts are a regular occurrence.

Due to its non-reactive qualities, 316 stainless steel is also used in the manufacture of medical surgical equipment.

Stainless Steel Trunking Weights 304					
size	50 x 50	75 x 50	75 x 75	100 x 50	100 x 75
	AGT22/SS 6.05kg	AGT32/SS 8.3kg	AGT33/SS 9.5kg	AGT42/SS 9.5kg	AGT43/SS 12.4kg
size	100 x 100	150 x 50	150 x 75	150 x 100	150 x 150
	AGT44/SS 12.4kg	AGT62/SS 12.4kg	AGT63/SS 14.2kg	AGT64/SS 16.4kg	AGT66/SS 18.0kg

NB - 304 will be supplied as standard unless otherwise specified

# manufacturing the difference



MANUFACTURING, SALES & DISTRIBUTION



SALES & DISTRIBUTION

The information contained in this catalogue has been carefully compiled but we do not accept any responsibility for loss caused by any error contained herein. We reserve the right to alter prices without prior notice

© Armorduct Systems Limited 2014



[www.armorductsystems.co.uk](http://www.armorductsystems.co.uk)